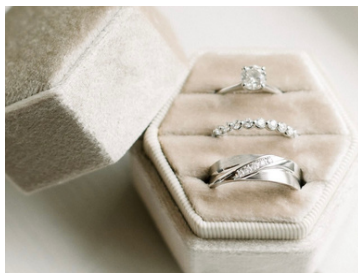


# BUILD YOUR CUSTOM *Lillian M. Collection* ENGAGEMENT RING



There's nothing more special than wearing a ring that's designed just for you and your love story. Our jewelry consultants are eager to help you personalize your piece to fit your unique needs with a customization process that's as easy as one, two, three.

From diamond size and shape to preferred metal type, we make the process easy and seamless. Learn how to create your dream ring today.



## HOW IT WORKS



### *Step 1:*

Creating your custom Lillian M. Collection engagement ring begins with meeting with one of our jewelry specialists. Once you submit a consultation request, you'll be connected with one of our expert jewelry consultants, who will be your guide through your bespoke experience.

Book a consultation with a Lillian M. jewelry specialist online at [lillianmcollection.com](http://lillianmcollection.com) or text (940) 222-5636.

### *Step 2:*

During your one-on-one consultation, your Lillian M. Collection jewelry specialist will ask detailed questions about your aesthetic, lifestyle, and budget. You'll get to try various styles and options with our magnetic ring builder and designer rings.

Once your jewelry consultant has helped you determine a stone shape, setting type and metal, they'll get started on the ring design process!



### *Step 3:*

After your custom Lillian M. Collection engagement ring has been designed, our jewelry specialist will show you detailed renderings of your ring so you can make a final decision.

Once you approve the design, our team will get started on crafting your ring and making your dream come to life just in time for the big day!